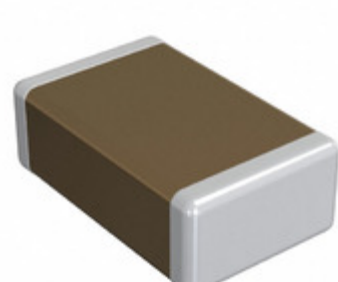


GRM2165C2A101GA01D



INNOVATOR IN ELECTRONICS

Part Number: [GRM2165C2A101GA01D](#)

Manufacturer: [Murata Electronics](#)

Description: CAP CER 100PF 100V C0G/NP0 0805

Data sheet: [PDF Chip Monolithic Ceramic Caps Part Numbering](#)
[PDF GRM2165C2A101GA01 Ref Sheet](#)
[PDF Chip Monolithic Ceramic Caps Catalog](#)

RoHS Status: Lead free / RoHS Compliant

Ship From: Hong Kong

Shipment Way: DHL/Fedex/TNT/UPS/EMS

Images are for reference only.
See Product Specifications for product details.
Buy GRM2165C2A101GA01D with confidence from Component-World.HK, 1 Year Warranty

[Request For Quotation](#)

PRODUCT PARAMETER

| | | | |
|---------------------------------------|--------------------------------------|---|--|
| Part Number | GRM2165C2A101GA01D | Manufacturer | Murata Electronics |
| Description | CAP CER 100PF 100V C0G/NP0 0805 | Lead Free Status / RoHS Status | Lead free / RoHS Compliant |
| Quantity Available | 1322990 pcs | Data sheet | Chip Monolithic Ceramic Caps Part Numbering GRM2165C2A101GA01 Ref Sheet Chip Monolithic Ceramic Caps Catalog |
| Category | Capacitors | Voltage - Rated | 100V |
| Tolerance | ±2% | Thickness (Max) | 0.028" (0.70mm) |
| Temperature Coefficient | C0G, NP0 | Size / Dimension | 0.079" L x 0.049" W (2.00mm x 1.25mm) |
| Series | GRM | Ratings | - |
| Packaging | Tape & Reel (TR) | Package / Case | 0805 (2012 Metric) |
| Other Names | 490-14815-2 GRM2165C2A101GA01D-ND | Operating Temperature | -55°C ~ 125°C |
| Mounting Type | Surface Mount, MLCC | Moisture Sensitivity Level (MSL) | 1 (Unlimited) |
| Lead Style | - | Lead Spacing | - |
| Lead Free Status / RoHS Status | Lead free / RoHS Compliant | Height - Seated (Max) | - |
| Features | - | Detailed Description | 100pF ±2% 100V Ceramic Capacitor C0G, NP0 0805 (2012 Metric) |
| Capacitance | 100pF | Applications | General Purpose |

Component-World.com is a Reliable Stocking Distributor of Electronic Components. We specialize in all Murata Electronics series electronic components. We have 1322990 pieces of Murata Electronics GRM2165C2A101GA01D in stock available now. Request a quote from electronics components distributor at Component-World.com, our sales team will contact you within 24 hours.

RFQ Email: info@Components-World.com

RELATED PRODUCTS

| | | | |
|--|--|--|---------------------|
| | Part#: GRM2165C1HR90CD01D Description: CAP CER 0.9PF 50V NP0 0805 | Manufacturers: Murata Electronics | RFQ |
| | Part#: GRM2165C1HR30CD01D Description: CAP CER 0.3PF 50V NP0 0805 | Manufacturers: Murata Electronics | RFQ |
| | Part#: GRM2165C1HR20BD01D Description: CAP CER 0.2PF 50V NP0 0805 | Manufacturers: Murata Electronics | RFQ |
| | Part#: GRM2165C2A122JA01J Description: CAP CER 1200PF 100V C0G/NP0 0805 | Manufacturers: Murata Electronics | RFQ |
| | Part#: GRM2165C2A121JA01D Description: CAP CER 120PF 100V C0G/NP0 0805 | Manufacturers: Murata Electronics | RFQ |
| | Part#: GRM2165C2A102JA01D Description: CAP CER 1000PF 100V C0G/NP0 0805 | Manufacturers: Murata Electronics | RFQ |
| | Part#: GRM2165C1HR70CD01D Description: CAP CER 0.7PF 50V NP0 0805 | Manufacturers: Murata Electronics | RFQ |
| | Part#: GRM2165C1HR75CD01D Description: CAP CER 0.75PF 50V C0G/NP0 0805 | Manufacturers: Murata Electronics | RFQ |
| | Part#: GRM2165C2A111JA01D Description: CAP CER 110PF 100V C0G/NP0 0805 | Manufacturers: Murata Electronics | RFQ |
| | Part#: GRM2165C1HR50CD01J Description: CAP CER 0.5PF 50V C0G/NP0 0805 | Manufacturers: Murata Electronics | RFQ |
| | Part#: GRM2165C2A131JA01D Description: CAP CER 130PF 100V C0G/NP0 0805 | Manufacturers: Murata Electronics | RFQ |
| | Part#: GRM2165C2A112JA01D Description: CAP CER 1100PF 100V NP0 0805 | Manufacturers: Murata Electronics | RFQ |
| | Part#: GRM2165C1HR40CD01D Description: CAP CER 0.4PF 50V NP0 0805 | Manufacturers: Murata Electronics | RFQ |
| | Part#: GRM2165C1HR80CD01D Description: CAP CER 0.8PF 50V NP0 0805 | Manufacturers: Murata Electronics | RFQ |
| | Part#: GRM2165C1HR60CD01D Description: CAP CER 0.6PF 50V NP0 0805 | Manufacturers: Murata Electronics | RFQ |
| | Part#: GRM2165C2A122JA01D Description: CAP CER 1200PF 100V C0G/NP0 0805 | Manufacturers: Murata Electronics | RFQ |
| | Part#: GRM2165C2A102JA01J Description: CAP CER 1000PF 100V C0G/NP0 0805 | Manufacturers: Murata Electronics | RFQ |
| | Part#: GRM2165C1HR50CD01D Description: CAP CER 0.5PF 50V C0G/NP0 0805 | Manufacturers: Murata Electronics | RFQ |
| | Part#: GRM2165C2A101JA01J Description: CAP CER 100PF 100V NP0 0805 | Manufacturers: Murata Electronics | RFQ |
| | Part#: GRM2165C2A101JA01D Description: CAP CER 100PF 100V C0G/NP0 0805 | Manufacturers: Murata Electronics | RFQ |

Related keywords for GRM2165C2A101GA01D

| | | | |
|---------------------------------------|--------------------------------|----------------------------------|----------------------------------|
| Murata Electronics GRM2165C2A101GA01D | GRM2165C2A101GA01D distributor | GRM2165C2A101GA01D supplier | GRM2165C2A101GA01D price |
| GRM2165C2A101GA01D download datasheet | GRM2165C2A101GA01D datasheet | GRM2165C2A101GA01D stock | buy GRM2165C2A101GA01D |
| Murata Electronics GRM2165C2A101GA01D | MURATA GRM2165C2A101GA01D | Murata Electronics North America | TOKO / Murata GRM2165C2A101GA01D |
| | | GRM2165C2A101GA01D | |